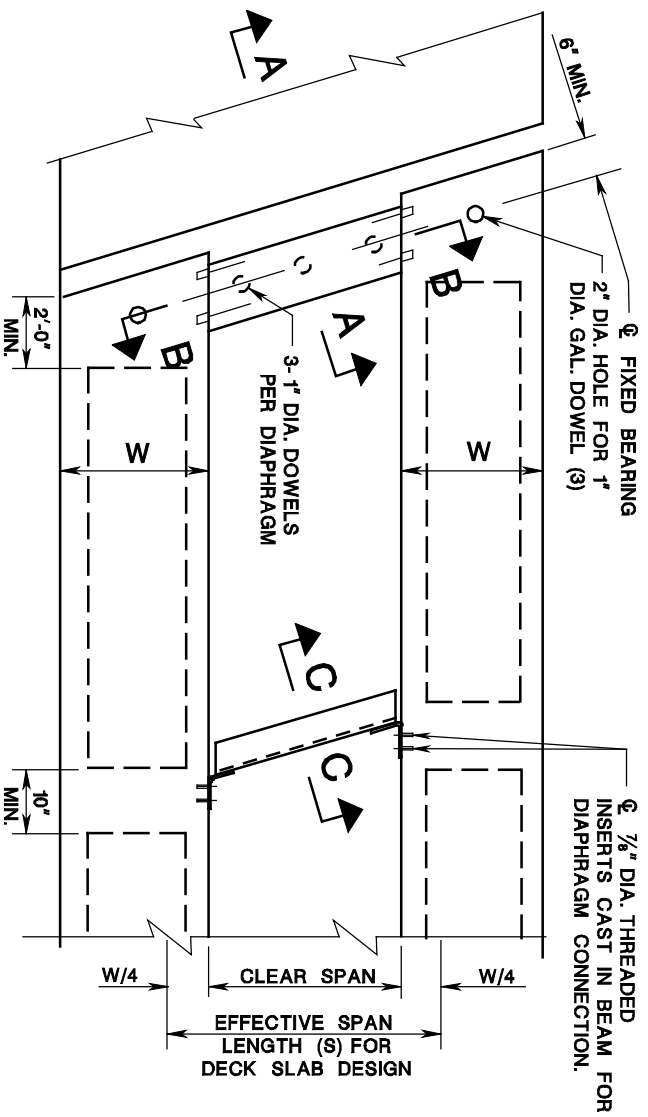


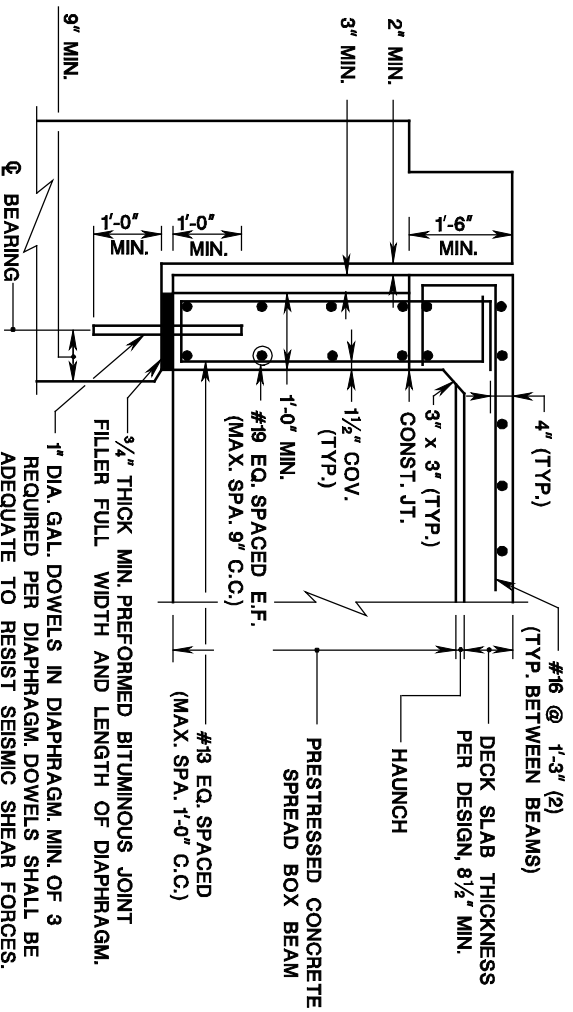
P.C. SPREAD BOX BEAMS DIAPHRAGM DETAILS (SHEET 1 OF 3)

ISSUED: 2009

PLATE
3.10-20



PLAN



SECTION A-A, FULL DEPTH FIXED END DIAPHRAGM

NOTES:

1. ALL REINFORCING STEEL, DOWELS AND DIMENSIONS SHOWN ARE MINIMUM. MODIFY DETAILS AS REQUIRED BY DESIGN.
2. THE #16 BARS IN THE HAUNCH BETWEEN BEAMS SHALL BE LAPPED TO THE TOP LONGITUDINAL REINFORCEMENT AND SHALL BE CORROSION PROTECTED.
3. REFERENCE NOTES 1 AND 2 ON GUIDE SHEET PLATES 3.10-4, 3.10-5 AND 3.10-6 FOR THE CORING AND FILLING OF DOWEL HOLES IN ABUTMENTS AND PIER SEATS.
4. ALL REINFORCING STEEL IN END DIAPHRAGMS SHALL BE CORROSION PROTECTED.
5. INTERMEDIATE DIAPHRAGMS SHALL BE STEEL.
6. END DIAPHRAGMS SHALL BE CAST IN PLACE CONCRETE.